



More people
More active
More often



We are **ukactive** >

Members Update – 10th May 2021

Latest Update

England

- Step 3 confirmed

Wales

- Guidance released for 3rd and 17th May

Please read this guidance in-line with the ukactive [operational procedures](#)

England

Following the Prime Ministers announcement and release of the [road map document](#) on Monday 22nd February, please see latest updates. [On 10th May](#), the Prime Minister confirmed England will move into Level 3 from the 17th May.

Roadmap Announcement

All dates subject to change following Government announcements – [for latest Government guidance](#).

If details for Step 1 needed, please get in contact and we can share – England is currently in Step 2 (from the 12th April)

Step 2

- Indoor Gym, leisure centres and swimming pools re-open for individual use
- Group Exercise not allowed
- spas to reopen (excluding saunas and steam rooms)
- Indoor sports courts can re-open
- Indoor 1:1/bubble PT/coaching/teaching can commence for adults
- Climbing walls can re-open
- All Covid-secure guidelines must be followed, including details around [Test and Trace](#)
- Indoor Sport allowed for under 18's.
- Parent and child groups of up to 15 people (not counting children aged under five years old) can restart indoors
- Café/restaurant areas can offer outdoor seating, following relevant guidance)
- Outdoor skating rinks, trampoline parks and water parks can re-open
- Government guidance for [Providers of grassroot sport and sports facilities](#)

Step 3 (not before 17th May)

- Organised adult Indoor group sports and exercise classes can resume.
- Saunas and steam rooms within spas and indoor leisure facilities will also be able to reopen with 50% capacity



More people
More active
More often



We are **ukactive** >

- All Covid secure guidelines must be followed
- Childrens play areas can re-open
- Restrictions on meetings outdoors will be lifted
- Indoor cafes and restaurants can re-open
- The following can also re-open indoors
 - Adventure playgrounds and activities
 - bowling alleys
 - skating rinks
 - games, recreation and entertainment venues such as escape rooms and laser quest
 - snooker and pool halls
 - trampolining parks
 - water and aqua parks

Step 4 (not before 21st June)

- All other areas can re-open
- No legal limit on social contact

Scotland

Current Guidance

As of the 26th April, all areas of Scotland moved into level 3

Read the [timetable for easing restrictions](#) and view the [Coronavirus section](#) for all updates.

For further details of sports guidance please follow the [Sport Scotland guidance](#)

From 26th April (level 3) – Current Guidance

- Indoor Gym, leisure centres and swimming pools re-open for individual use
- Indoor Group Exercise not allowed
- Indoor 1:1 PT/coaching/teaching can commence for adults, but social distancing must remain
- All Covid-secure guidelines must be followed
- Changing rooms can open, but it is advised that people attend ‘exercise ready’
- You must display the max occupancy in signage at the front of the facility,
- Outdoor group coaching for organised sport and physical activity including aerobics and fitness classes can take place with up to 30 people at any one time in Level 3, including the coach, if physical distancing is always maintained.

From 17th May

- all level 3 areas - or as many as possible - will move to level 2.
- adult outdoor contact sports and indoor group exercises can resume.
- Sauna and spa's can re-open

Early June



More people
More active
More often



We are **ukactive** >

- all of Scotland will move to level 1

by end of June

- all of Scotland to move to level 0

The latest FAQ's from Sport Scotland are available here - [Sport Scotland guidance](#)

Wales

Current Guidance

Wales is in Level 3 of the [Coronavirus Control Plan](#).

Following the [announcement from the First Minister](#) on 22nd April, the below timescales were given:

Current Guidance, from 3rd May – Wales moved into Alert level 3

- Gyms, leisure centres and fitness facilities can reopen.
- Spa's and saunas can open (steam rooms must remain closed)
- The resumption of indoor supervised activities for children
- Indoor organised activities for up to 15 adults (such as exercise classes and swimming lessons) will return

From 17th May – (indicative date as depends on incoming Welsh Government)

- Wales will move to level 2 (up to 30 people in a class)
- Steam rooms may open

The Welsh Government updated the 'Sport, recreation and leisure: [Guidance for a safe return](#)

Northern Ireland

Following the [executives announcement](#) on 15th April:

Current guidance (from 30th April)

- Gyms, swimming pools and indoor exercise facilities open for individual use
- 1:1 PT/coaching can commence, but social distancing must remain

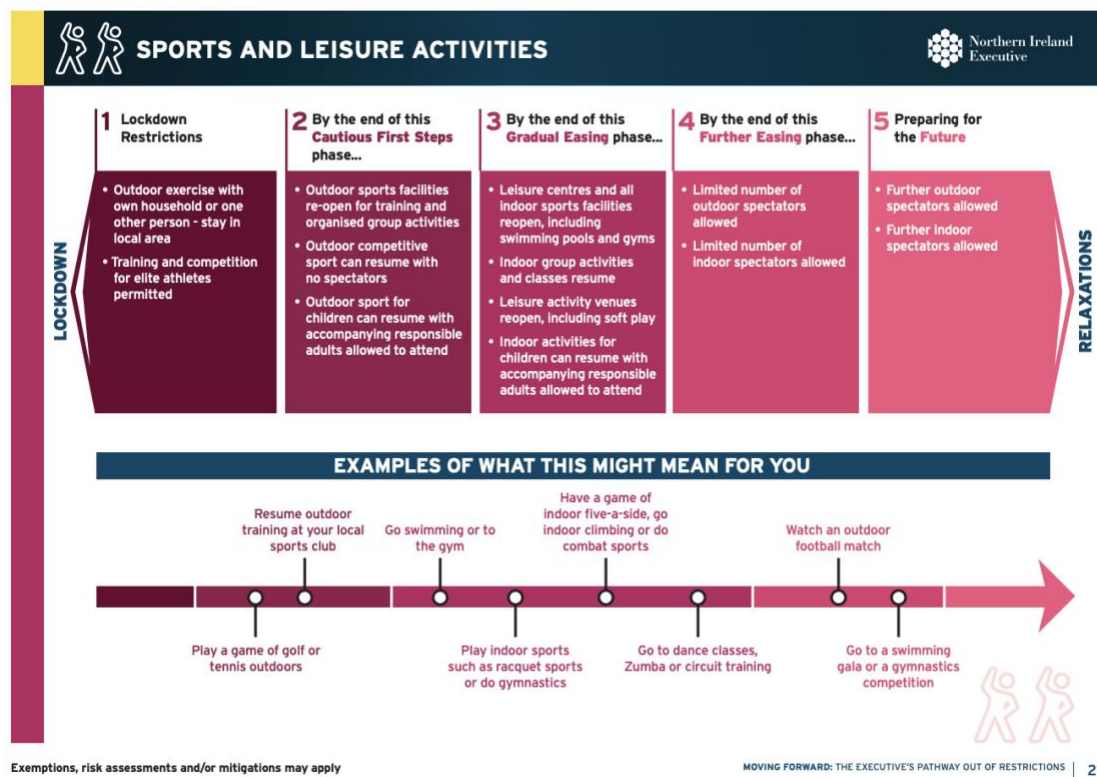
From 24th May (indicative date, TBC)

- Return of indoor group exercise and training (with mitigations)

Full Northern Irish Government guidance can be found here: [COVID-19: Guidance on the safe return of sport](#)

Review Update

On the 2nd March, the Executive announced its '[Pathway out of Restrictions](#)', which includes a 5 step approach for numerous sectors (including Sport and Leisure Activities), there are no dates associated with the different steps, but as an overview



Further details are [available here](#)

Northern Ireland Review Date – 13th May 2021

ukactive will update all relevant guidance and links as these become available. If you have not been able to find the link you need, or if you have any further questions relating to the content of this update, please contact the team using membership@ukactive.org.uk or by calling us on 0208 158 9700